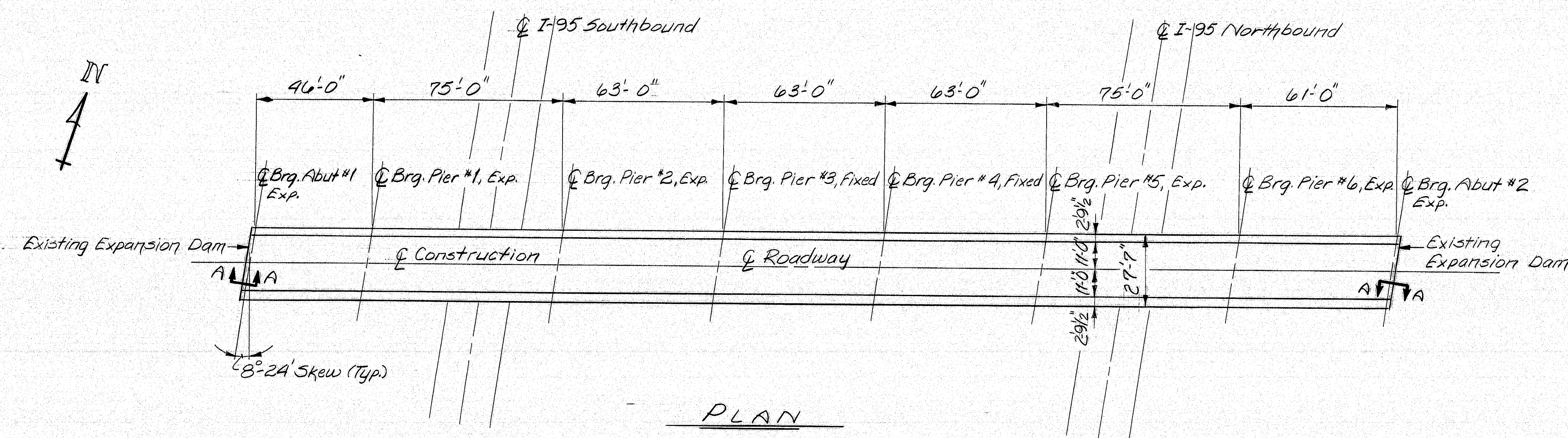
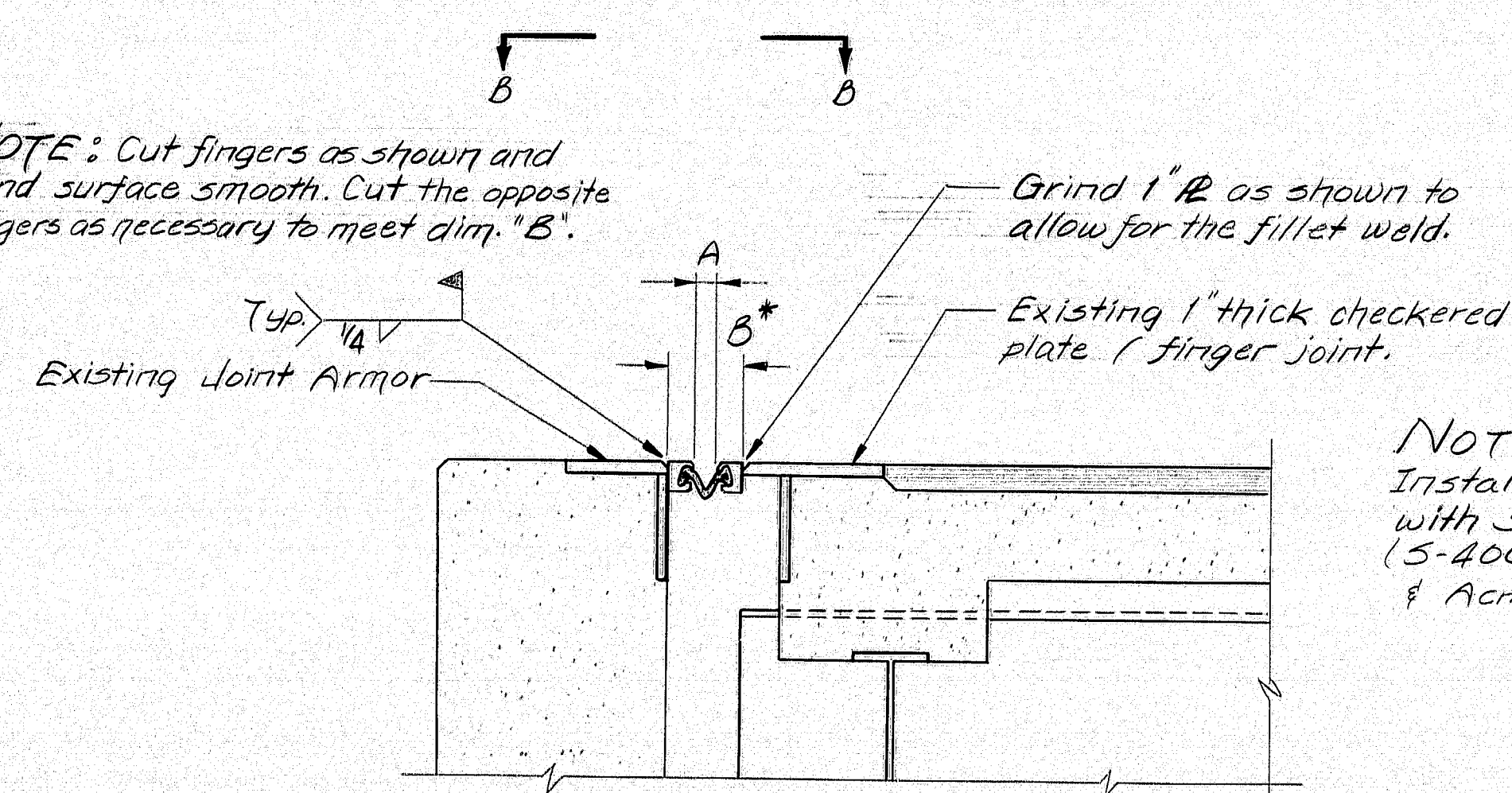


F.W.A. REG. NO.	STATE	PROJECT NUMBER	SHEET NO.	TOTAL SHEETS
1	MAINE	6165	1	

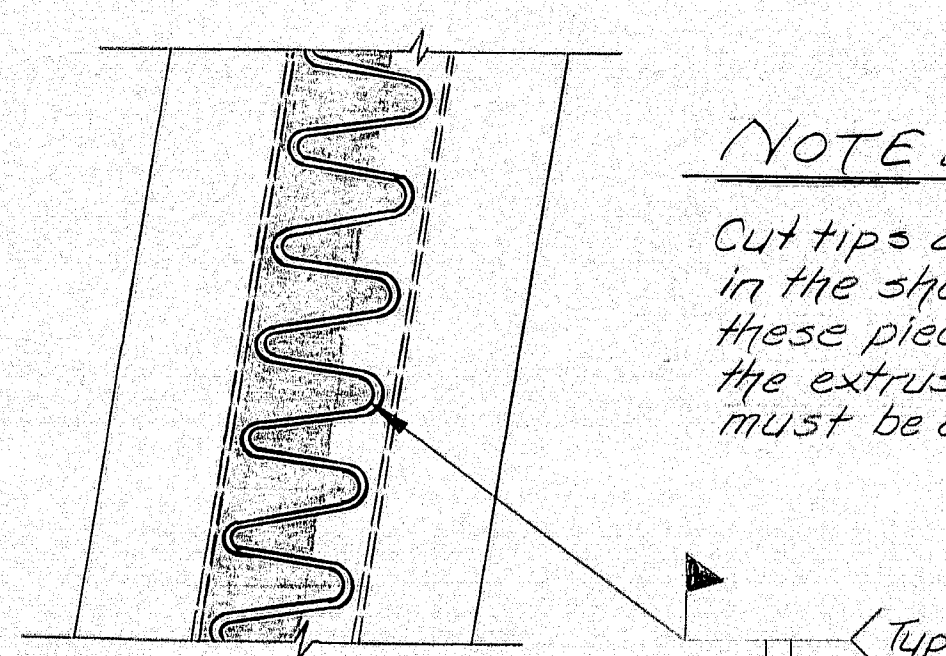


NOTE: Cut fingers as shown and grind surface smooth. Cut the opposite fingers as necessary to meet dim. "B".



NOTE: Install a Gland Seal with steel extrusions. (S-400 Watson-Bowman & Acme).

SECTION A-A



VIEW B-B

SCOPE OF WORK

Cut the expansion dam fingers as shown. Remove the expansion dam plates and concrete at the curbs as necessary to install the extrusions. Install the Gland seal and extrusions.

GENERAL NOTES

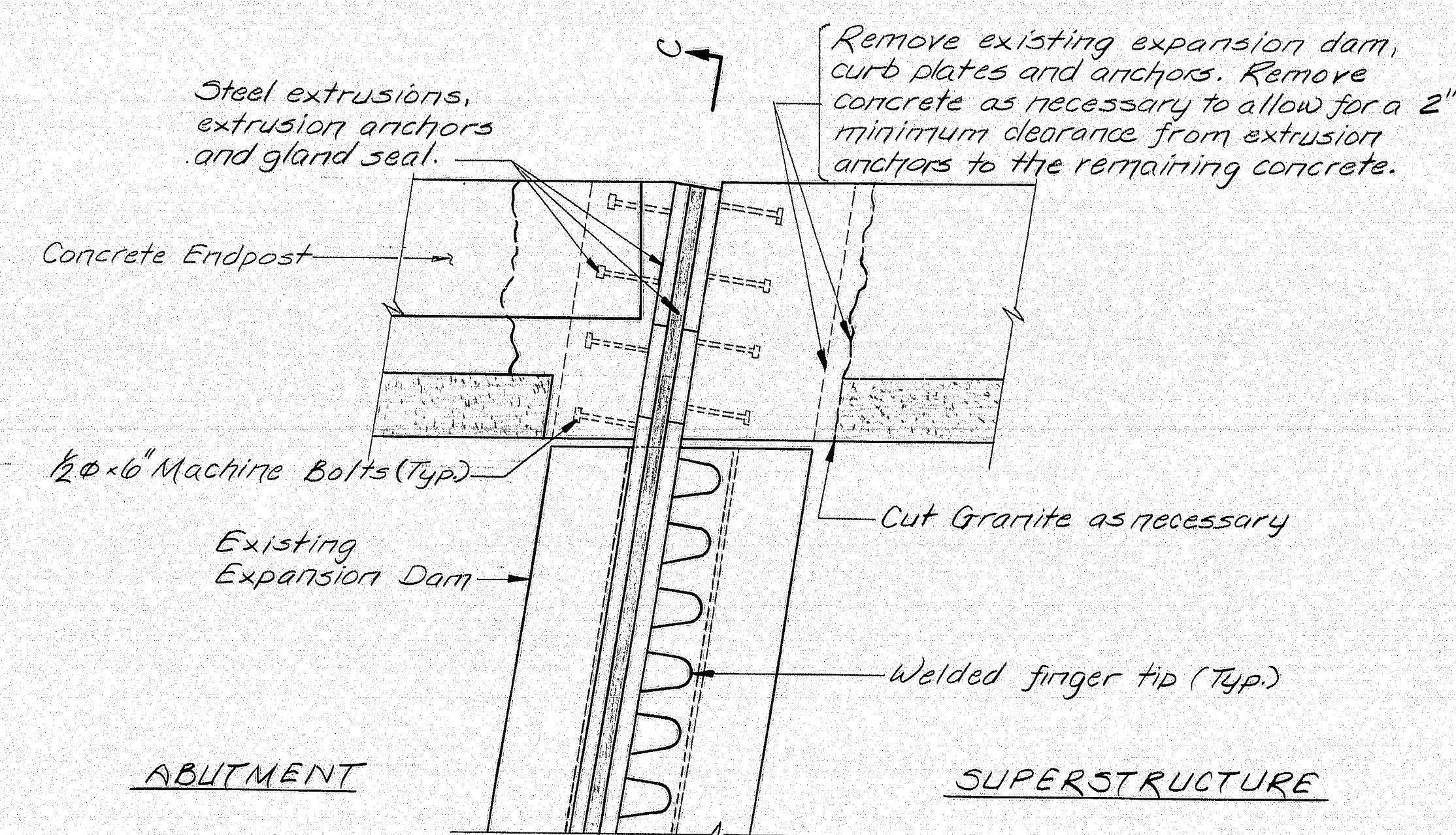
1. If any reinforcing steel is exposed after removing concrete, it shall be cleaned and bent/cut to meet a 2" minimum clearance, before placing new concrete.
2. Two Gland Seals with extrusions are required, each shall be 29'-0" long. (S-400 Watson-Bowman & Acme).

MATERIALS

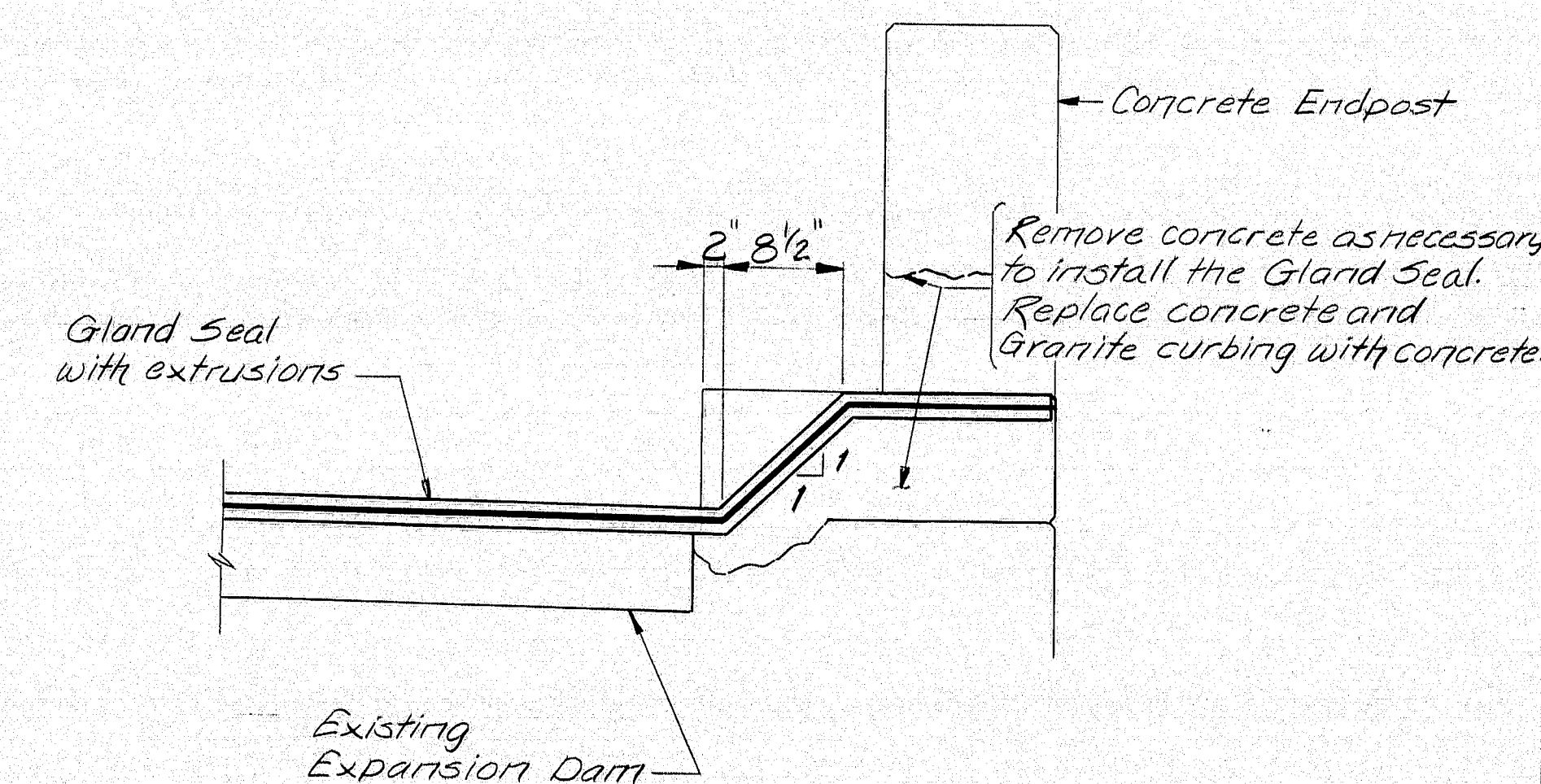
- 116 L.F. Total of steel extrusions
- 2 - 29'-0" long Gland Seals
- 32 - 1/2" φ x 6" Machine Bolts

TEMPERATURE ADJUSTMENT CHART													
DIM. "A"	TEMP °F	-5°	5°	15°	25°	35°	45°	55°	65°	75°	85°	95°	105°
Opening at Abutment #1		2 3/8"	2 3/4"	2 5/8"	2 1/2"	2 3/8"	2 1/4"	2 1/8"	2"	1 7/8"	1 3/4"	1 1/2"	1 1/8"
Opening at Abutment #2		2 3/8"	2 3/4"	2 5/8"	2 1/2"	2 3/8"	2 1/4"	2 1/8"	2"	1 7/8"	1 3/4"	1 1/2"	1 1/8"

* To Determine dimension "B" add 3" to the appropriate dimension "A".



JOINT SEAL AT CURB



ELEVATION C-C

111-17

STATE OF MAINE
DEPARTMENT OF TRANSPORTATION
CASEY ROAD BRIDGE
OVER
INTERSTATE 95
IN
BENEDICTA
ARROSTOOK COUNTY
GENERAL PLANS
SHEET 1 OF 1 AUGUSTA, MAINE SEP 1988

PROJECT DESIGN ENGINEER	DATE
DESIGN - DETAIL	9/88
REVISIONS	
FIELD CHANGES	
PLANS	

BRIDGING 44-132-4571D-1